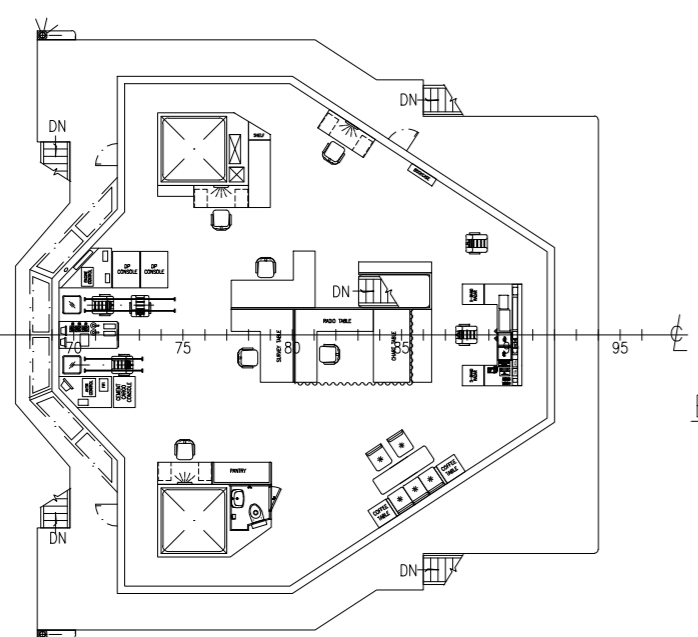
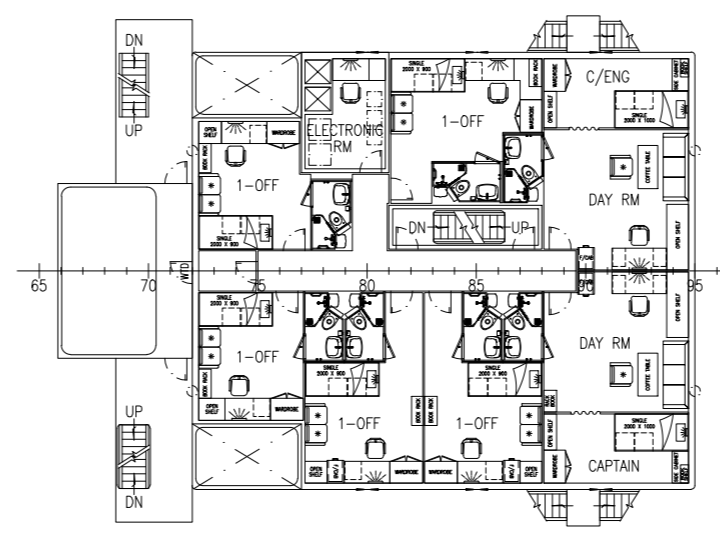


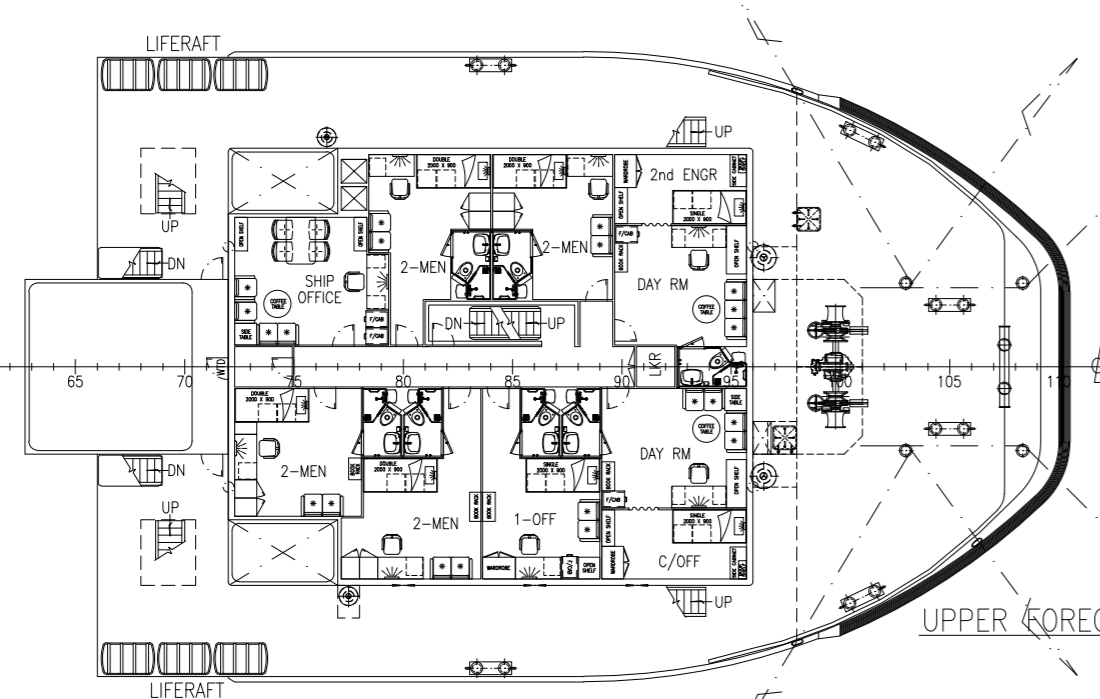
PROFILE



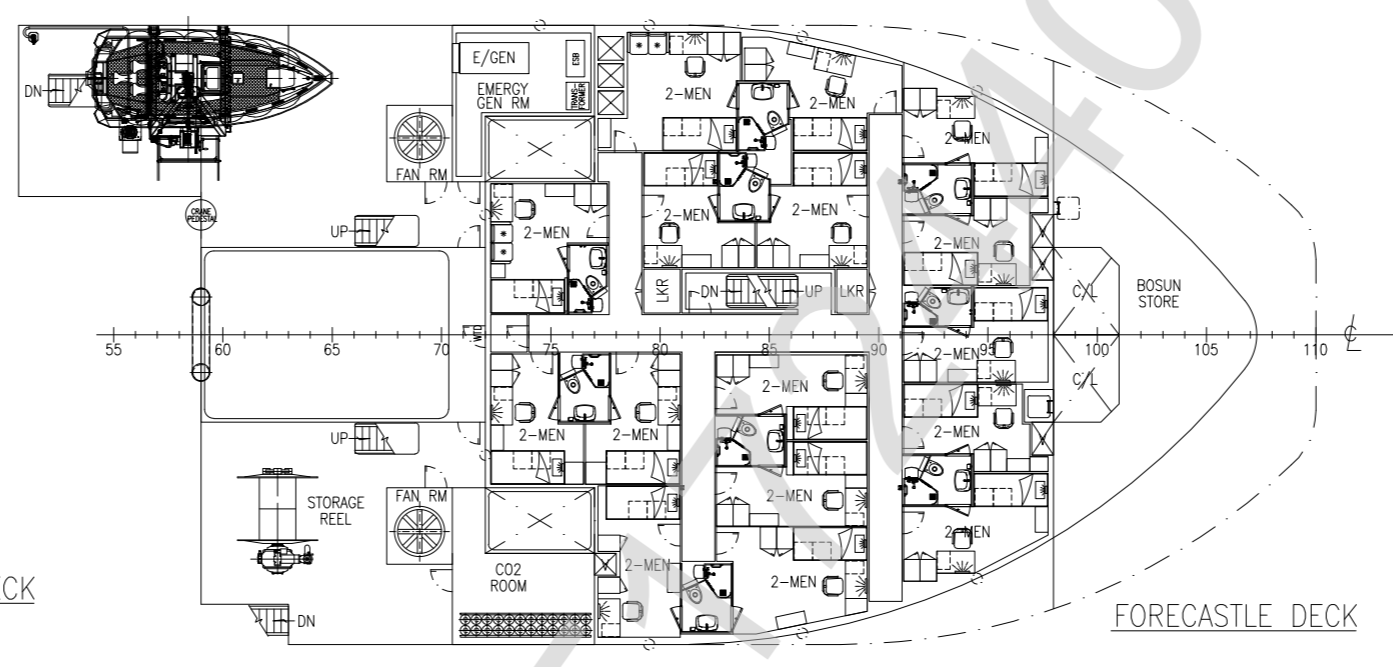
BRIDGE DECK



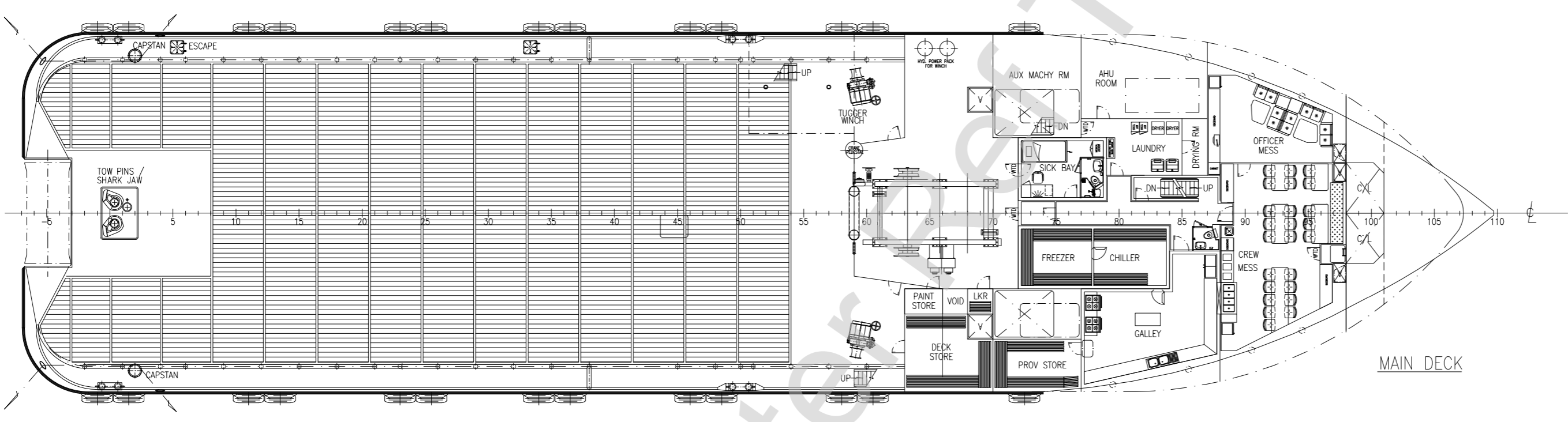
OFFICER DECK



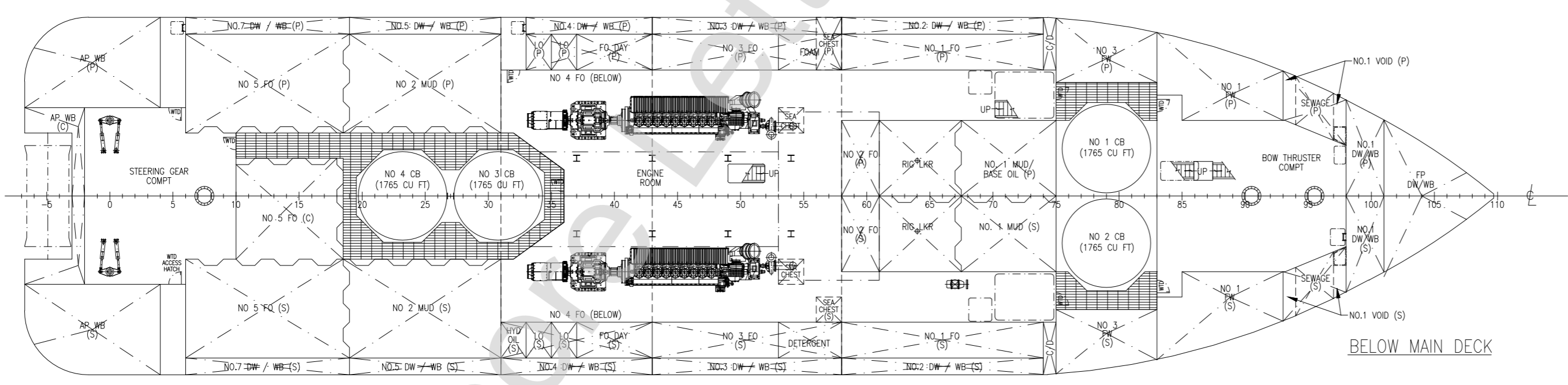
UPPER FORECASTLE DECK



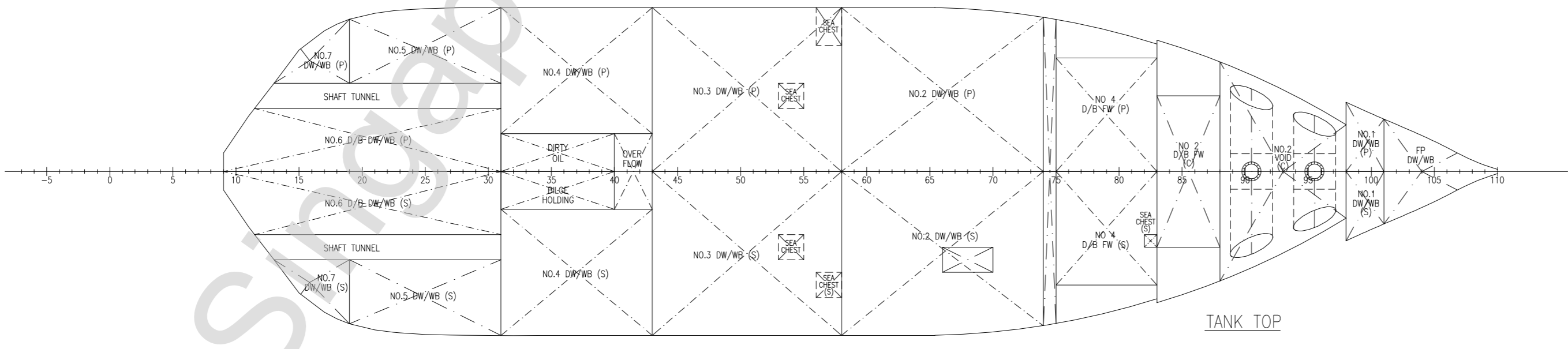
FORECASTLE DECK



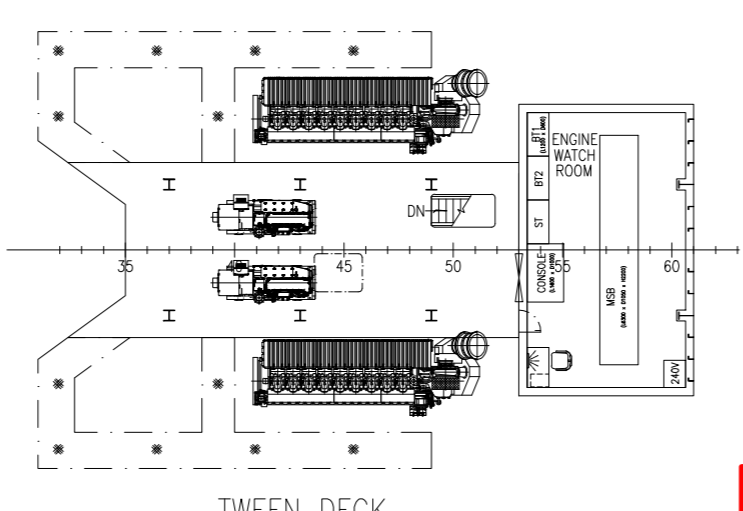
MAIN DECK



BELOW MAIN DECK



TANK TOP



TWEEN DECK

PRINCIPAL PARTICULARS

LENGTH O.A.	70.050 m
LENGTH W.L.	70.022 m
LENGTH B.P.	66.000 m
BREADTH MLD	17.000 m
DEPTH MLD	7.500 m
DESIGN DRAFT	6.100 m
TOTAL DWT (@ 6.10m)	Approx. 2400 tonnes
FUEL OIL	Approx. 700 m3
FRESH WATER	Approx. 500 m3
DRILL WATER / WATER BALLAST	Approx. 1200 m3
MUD	Approx. 480 m3
CLEAR DECK AREA	Approx. 500 m2
DECK CARGO (DECK LOADING @ 7.5 t/m ²)	Approx. 600 tonnes
DRY BULK TANKS (4 x 50 m ³)	200 m3
TOTAL INSTALLED POWER	2 x 2970 kW
SPEED (TRIALS)	13.5 knots
BOLLARD PULL	Approx. 100 tonnes
COMPLEMENT	50 men

CLASS & NOTATION : ABS *A1* TOWING VESSEL, FIRE FIGHTING CLASS 1, OFFSHORE SUPPORT VESSEL AH, *AMS, *DPS-2"

REVIEWED
 Details of this review are as indicated in the ABS letter

Review for Proposed Installation of FRC only

01	UPPER FORECASTLE DECK CABIN LAYOUT UPDATED AS PER SITE.	3-3-18	AK	VM
Rev.#	Description	Date	Drawn	Review
Issued for		Approval		
Client	MMA Offshore Asia Pte. Ltd.	Project	MMA CORAL HULL No. 892B	
Drg.#	Rev.# Drawing Title	Drawn	Kiran	
CT-18-5506-0001		Checked	Ajit	
Scale/Size	Date Sheet	GENERAL ARRANGEMENT		
1:200 A1	21.02.2018 1 of 1	Review-1	Vinod	
		Review-2		

Cybermarine Technologies Pte. Ltd.
 10, Bukit Batok Crescent,
 #12-01, The Spire Building, Singapore-658079.
 Tel : +65- 6316 6513, Fax: +65- 6316 6514,
 E-mail : singapore@cybermarine.net,
 website : www.cybermarine.net