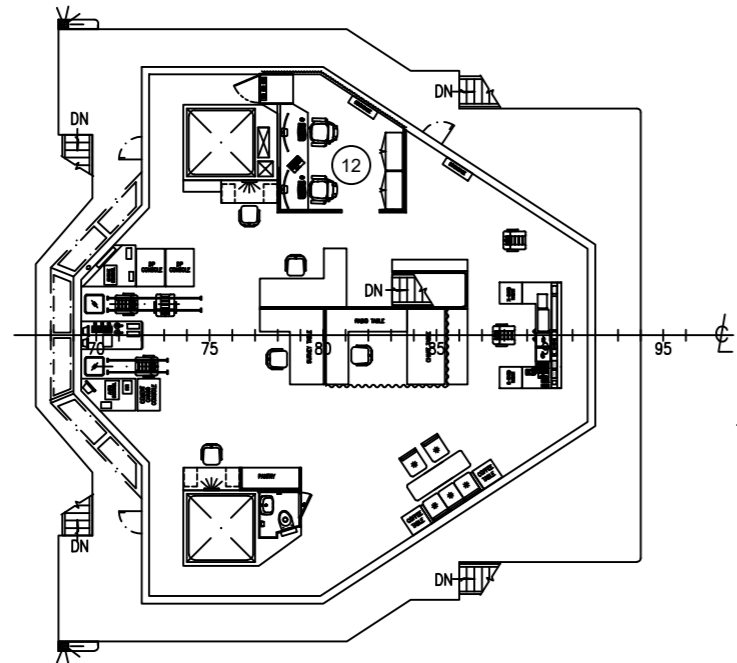
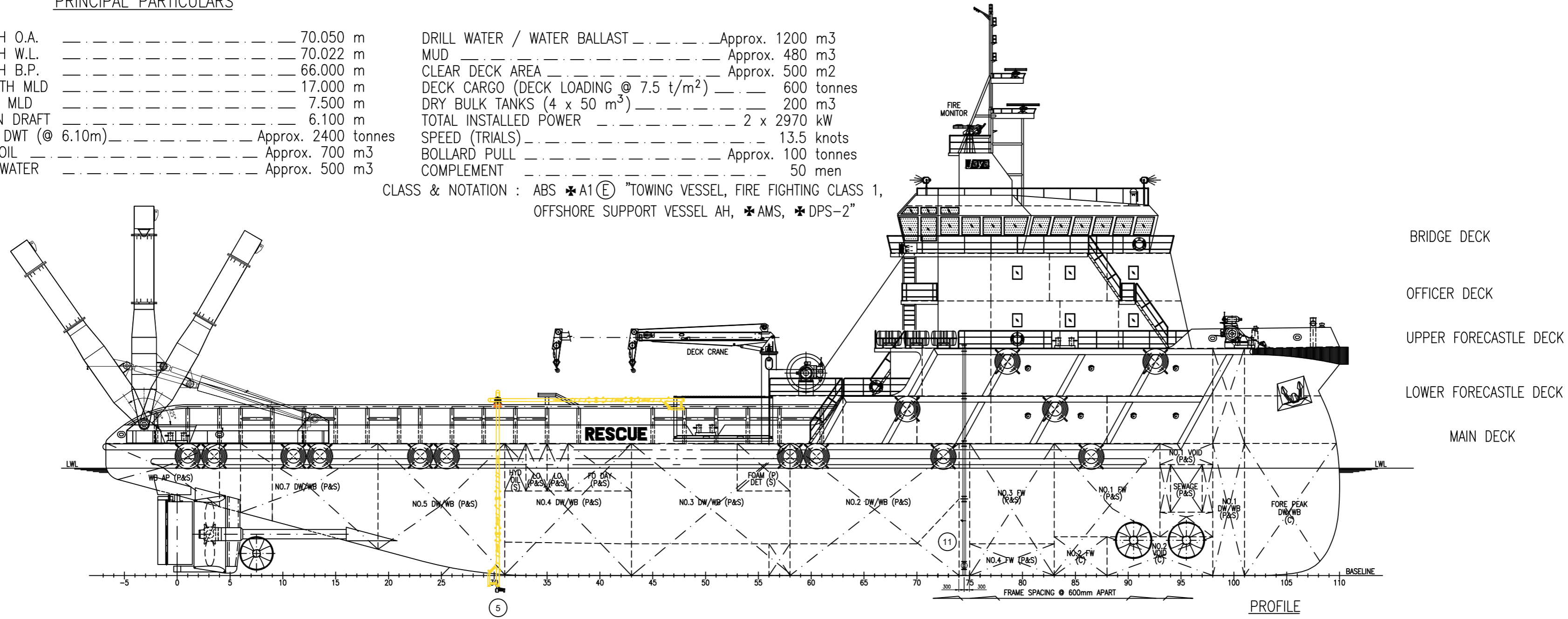


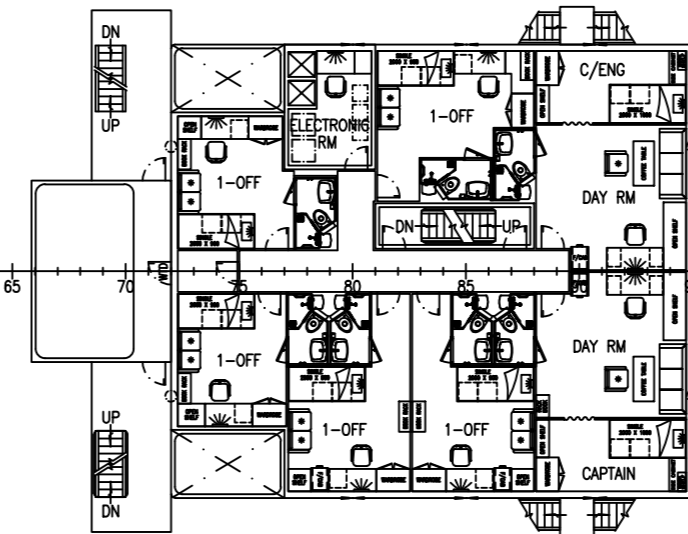
PRINCIPAL PARTICULARS

LENGTH O.A.	70.050 m	DRILL WATER / WATER BALLAST	Approx. 1200 m <sup>3</sup>
LENGTH W.L.	70.022 m	MUD	Approx. 480 m <sup>3</sup>
LENGTH B.P.	66.000 m	CLEAR DECK AREA	Approx. 500 m <sup>2</sup>
BREADTH MLD	17.000 m	DECK CARGO (DECK LOADING @ 7.5 t/m <sup>2</sup> )	600 tonnes
DEPTH MLD	7.500 m	DRY BULK TANKS (4 x 50 m <sup>3</sup> )	200 m <sup>3</sup>
DESIGN DRAFT	6.100 m	TOTAL INSTALLED POWER	2 x 2970 kW
TOTAL DWT (@ 6.10m)	Approx. 2400 tonnes	SPEED (TRIALS)	13.5 knots
FUEL OIL	Approx. 700 m <sup>3</sup>	BOLLARD PULL	Approx. 100 tonnes
FRESHWATER	Approx. 500 m <sup>3</sup>	COMPLEMENT	50 men

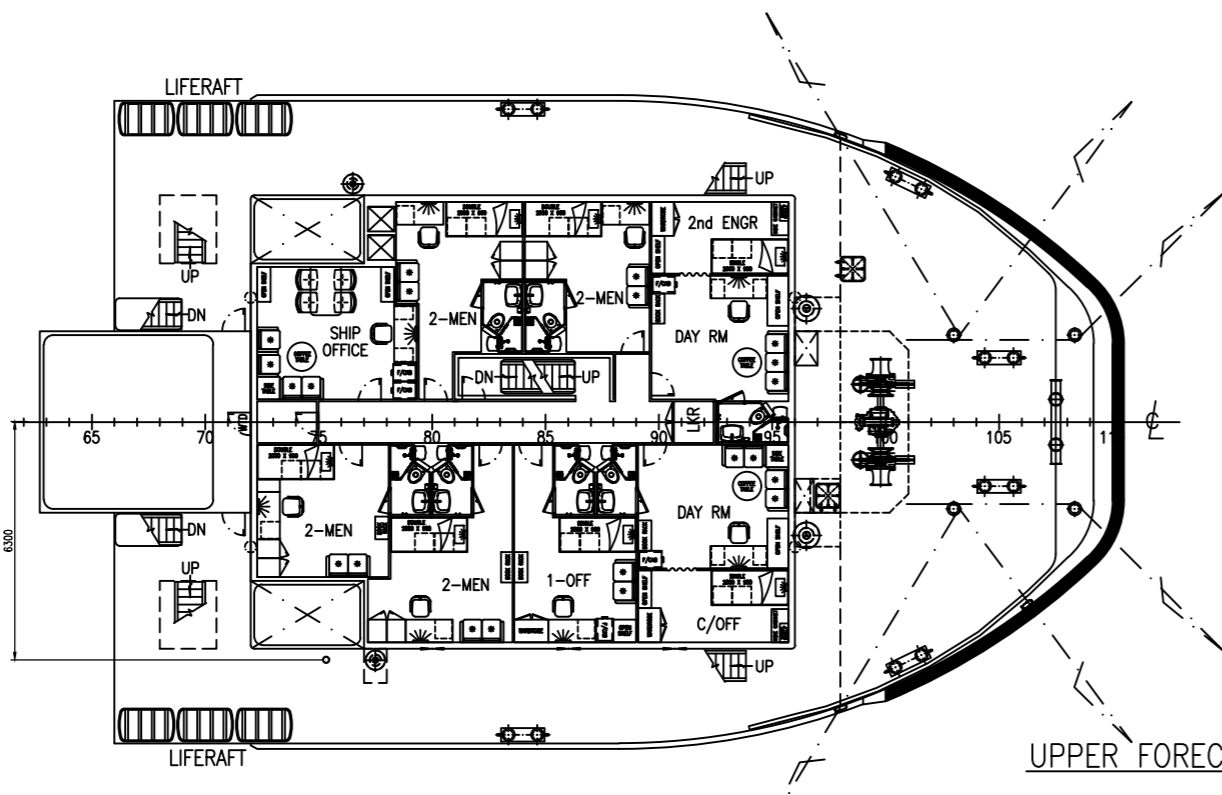
CLASS & NOTATION : ABS \*A1 (E) TOWING VESSEL, FIRE FIGHTING CLASS 1, OFFSHORE SUPPORT VESSEL AH, \*AMS, \*DPS-2"



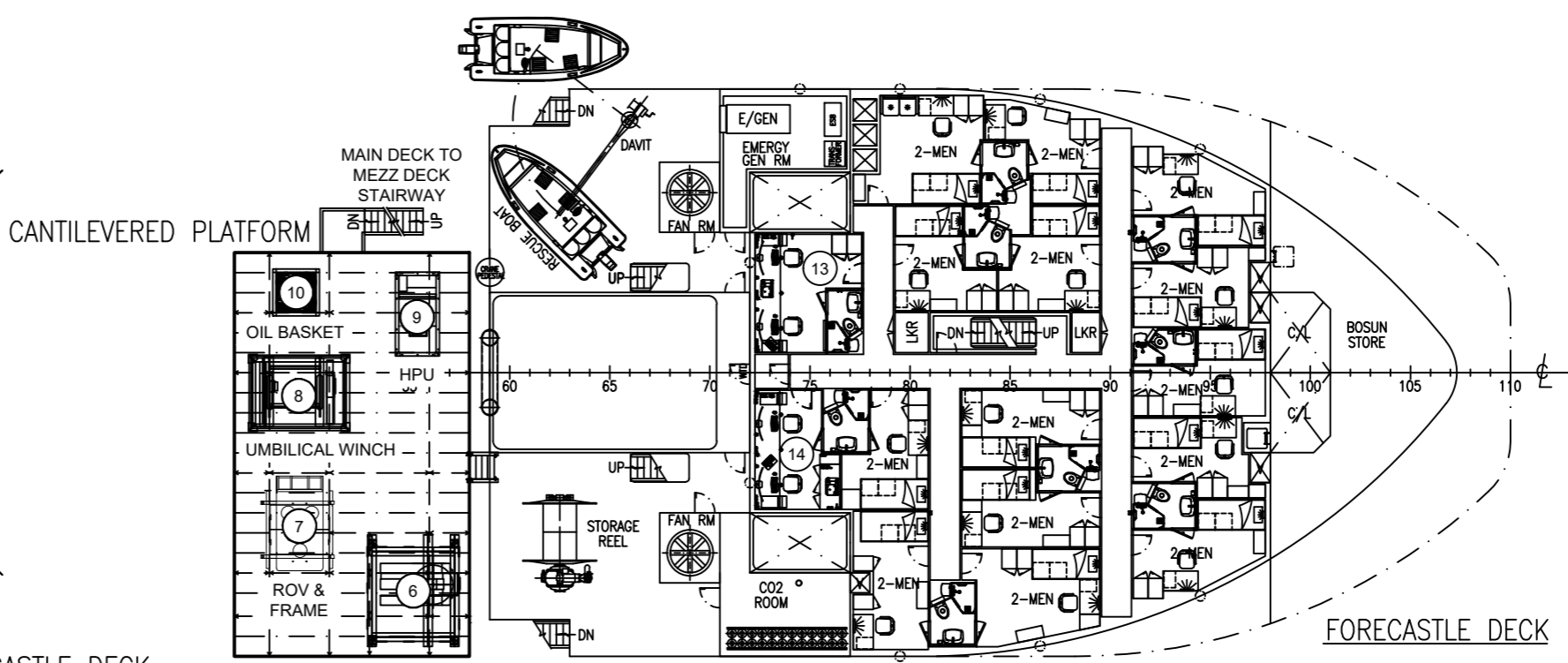
BRIDGE DECK



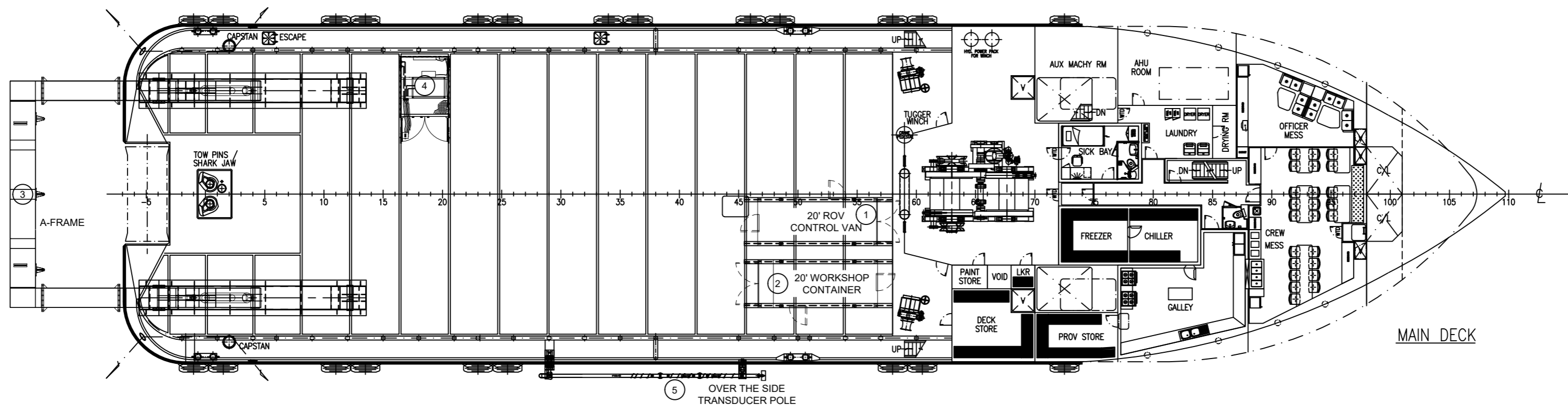
OFFICER DECK



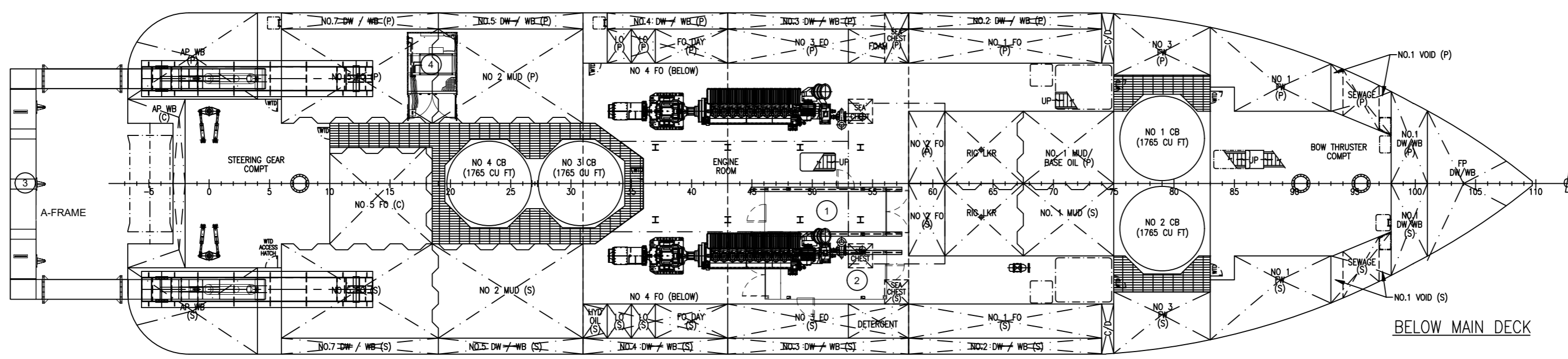
UPPER FORECASTLE DECK



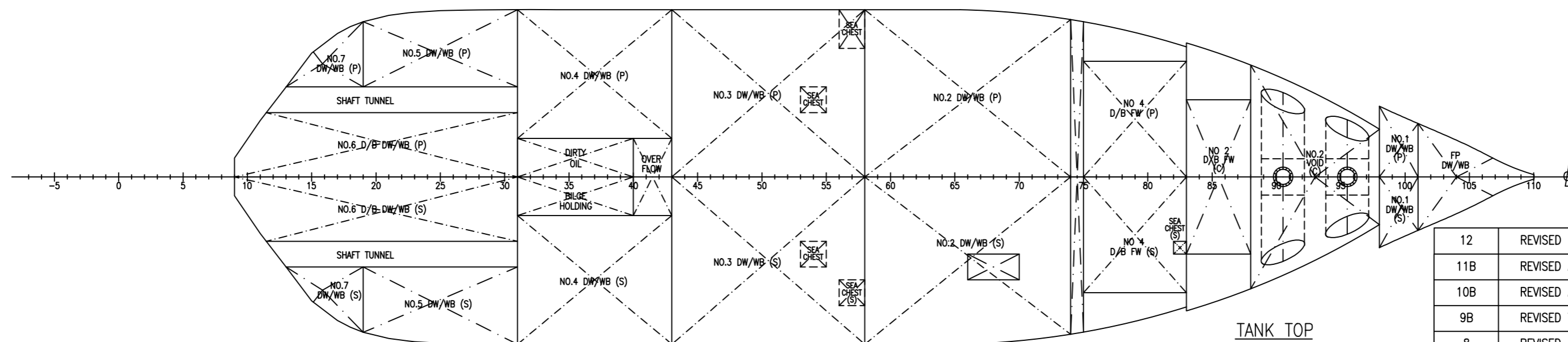
FORECASTLE DECK



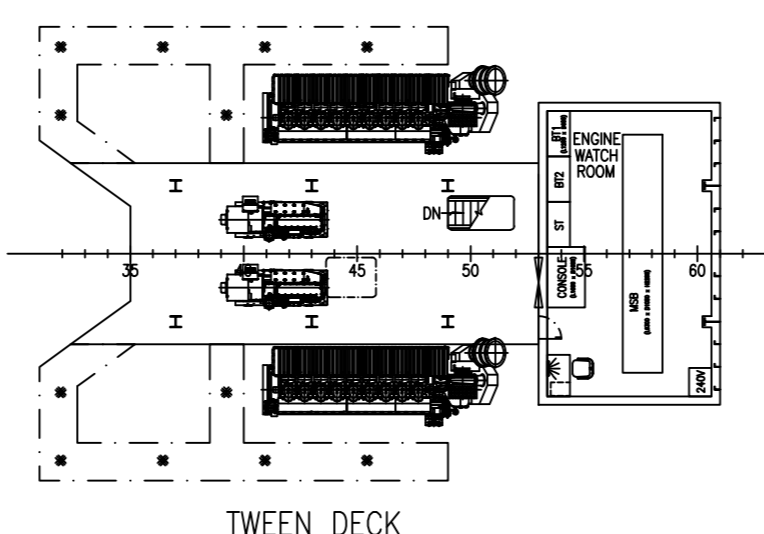
MAIN DECK



BELOW MAIN DECK



TANK TOP



TWEEN DECK

LEGEND

1	20' ROV CONTROL VAN
2	20' WORKSHOP CONTAINER
3	A-FRAME (XX, T SWL)
4	A-FRAME HPU
5	OVER THE SIDE TRANSDUCER POLE
6	LAUNCH & RECOVERY CRANE
7	ROV & FRAME
8	UMBILICAL WINCH
9	HPU
10	OIL BASKET
11	THROUGH HULL FLANGE
12	WHEELHOUSE DESK
13	SURVEY OFFICE 1
14	SURVEY OFFICE 2

12	REVISED FOR SURVEY LAYOUT.	GM/PY	06.10.21
11B	REVISED AS DESIGN PROGRESSED.	SJ	12.05.09
10B	REVISED AS DESIGN PROGRESSED.	SJ	17.10.08
9B	REVISED TO ACCOMMODATE TOWING WINCH.	SJ	11.09.08
8	REVISED AS DESIGN PROGRESSED	SJ	21.07.08
7	REVISED AS DESIGN PROGRESSED	SJ	02.06.08
6	REVISED AS DESIGN PROGRESSED	TS	14.04.08
5	SHAFTLINE AT 2350mm ABL; PROPELLER CENTRE SHIFTED 50mm AFT	TS	18.01.08
4	DECK MACHY REPLACED;	TS	31.10.07
3	COMPLEMENT INCREASED TO 50	TS	31.10.07
Rev	Alterations	By	Date

<p>This document and the information it contains is copyright of MMA OFFSHORE. It is not to be copied, in whole or in part, or distributed in any form without the prior written consent of MMA OFFSHORE.</p>		<p>MMA OFFSHORE SHIPYARD AND ENGINEERING SERVICES PTE. LTD. MANILFA TOWER LEVEL 8 8 CROSS STREET SINGAPORE 048424 Website: mmaoffshore.com</p>
	<p>Classification: ABS</p>	<p>Hull No: 8928/8938</p>
<p>Designer: MMA OFFSHORE</p>	<p>Drawn: PRISCILLA YAP</p>	<p>Date: 07.10.21</p>
<p>Project: 70m ANCHOR HANDLING SUPPLY VESSEL</p>	<p>Checked: GLENN MCPHEE</p>	<p>Date: 07.10.21</p>
<p>Title: GENERAL ARRANGEMENT</p>	<p>Drawing No: P0721-G1</p>	<p>Rev: 12</p>

Approved By :  
On :