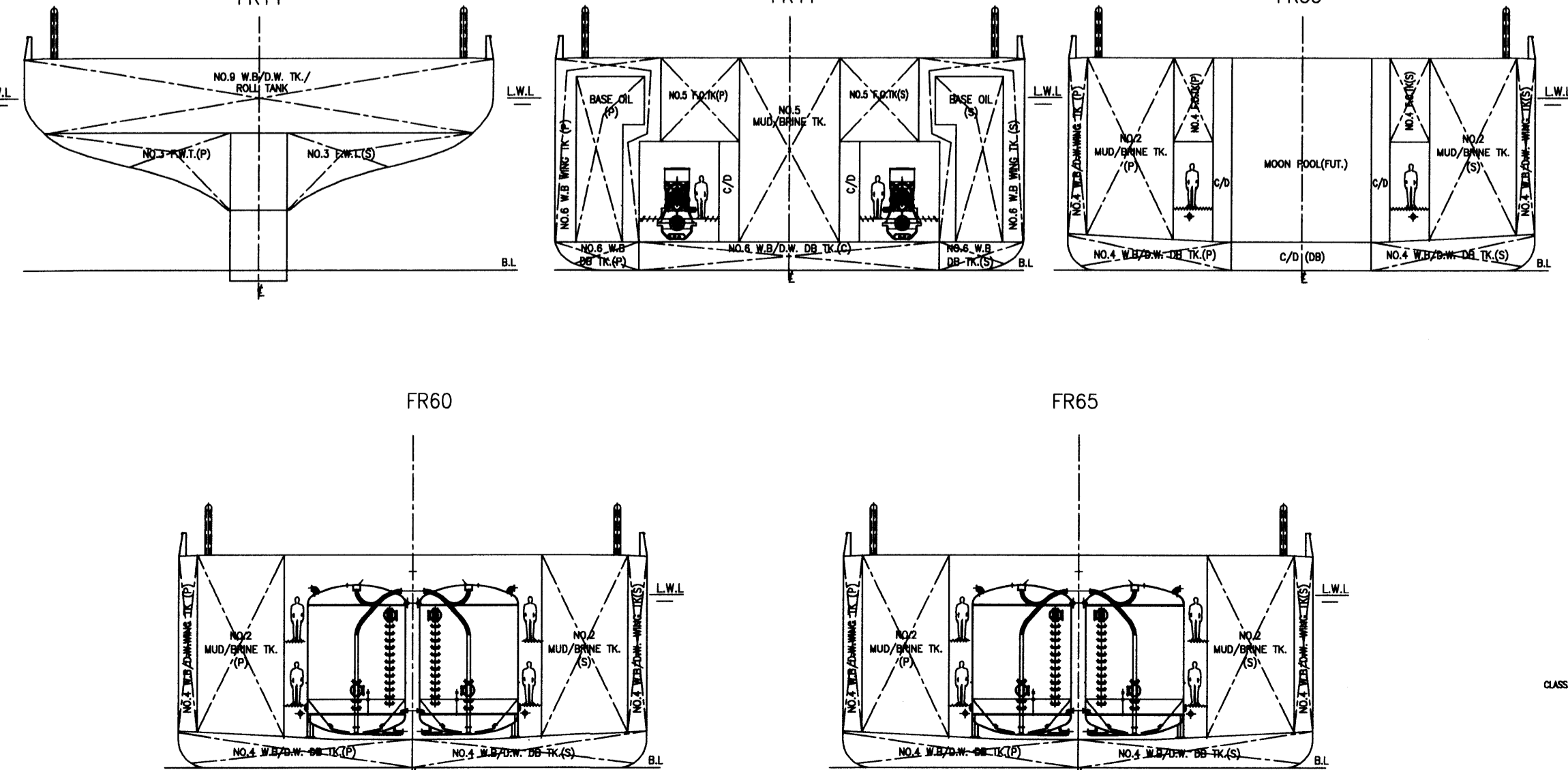
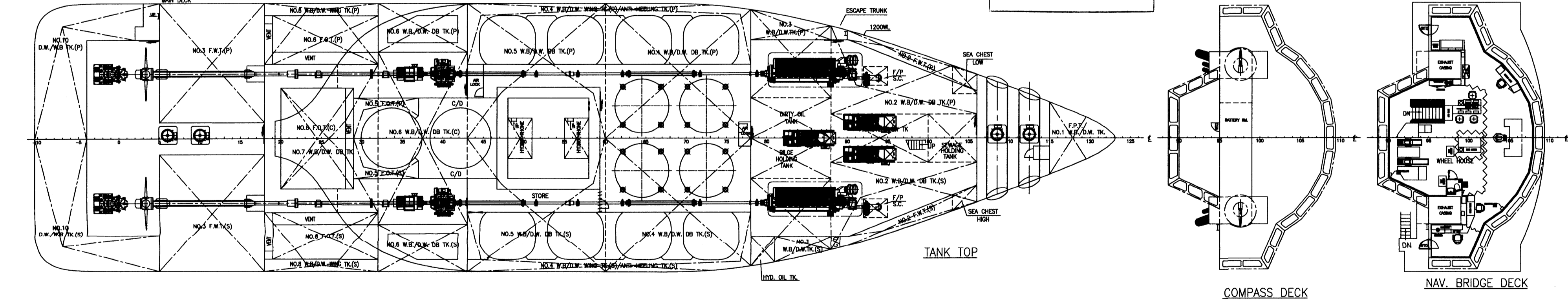
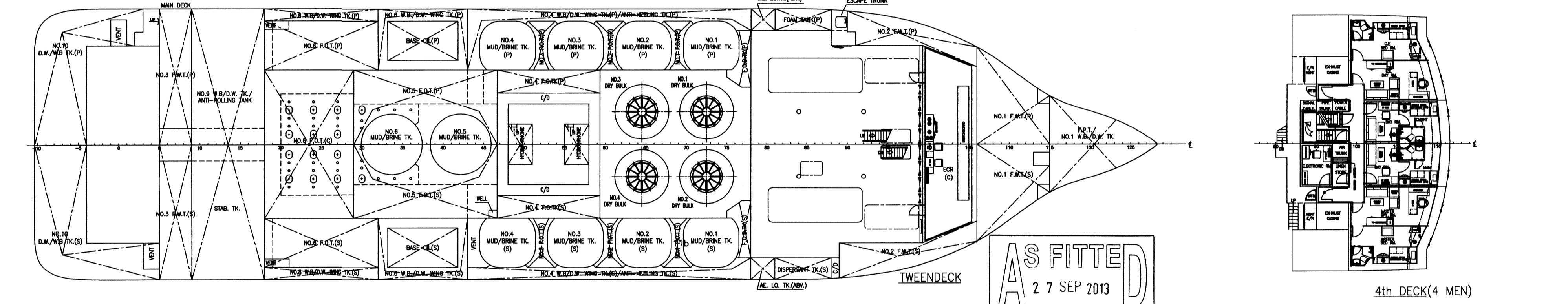
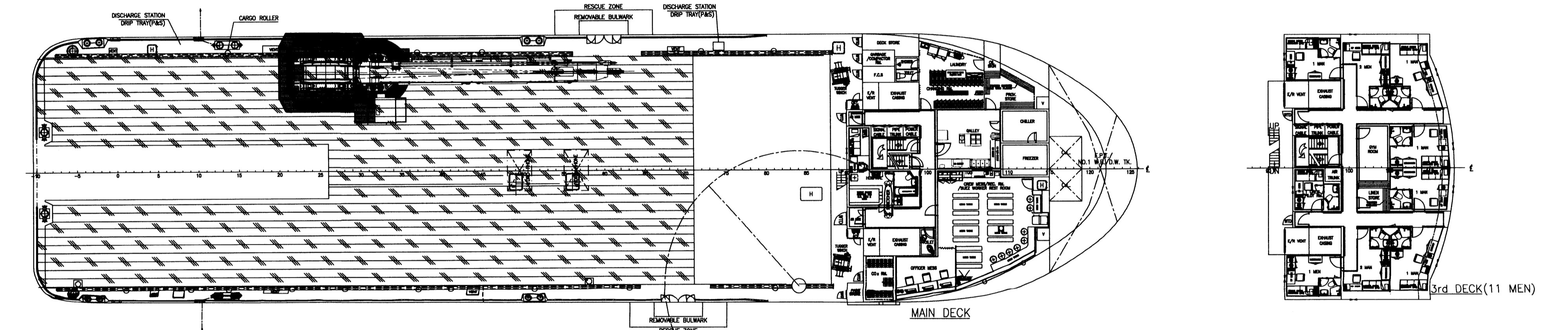
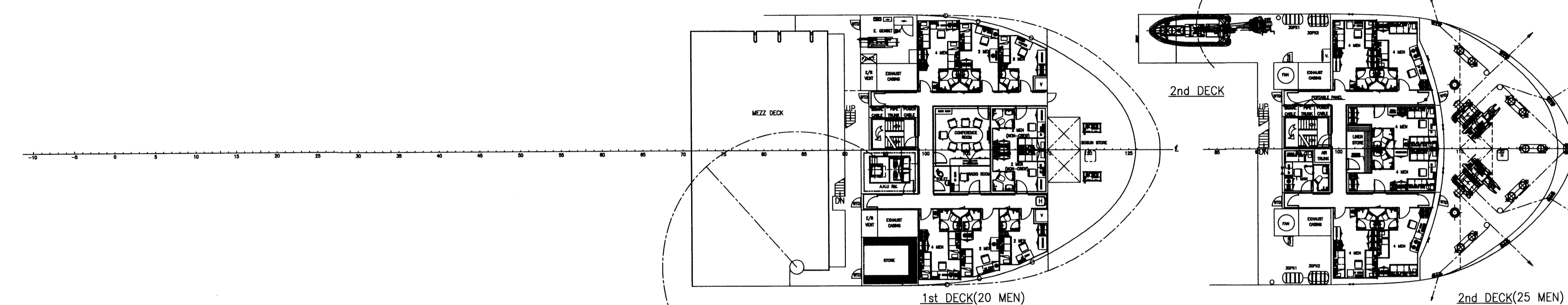
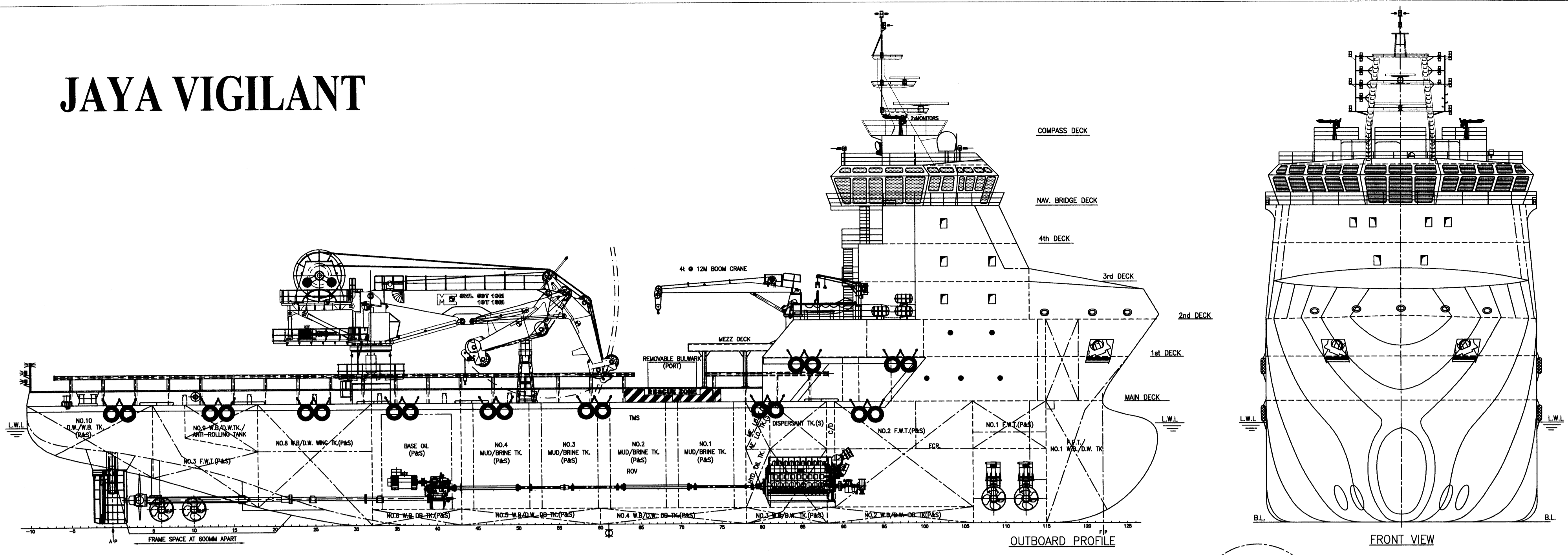


JAYA VIGILANT



ACCOMMODATION

12x1	12 MEN
8x2	16 MEN
8x4	32 MEN
28 CABINS	60 MEN

PRINCIPAL PARTICULARS

LENGTH OA	83.60 M
LENGTH BP	73.20 M
BEAM MLD.	20.00 M
DEPTH MLD.	9.00 M
DRAFT DESIGNED	7.35 M
DRAFT SCANTLING	7.50 M
COMPLEMENT	60 MEN
DK CARGO AREA	850 M ²
FUEL OIL	1,350 M ³
POTABLE WATER	850 M ³
CEMENT TANK	300 M ³
BASE OIL	130 M ³
W.B./D.W.	1,750 M ³
MUD/BRINE	1050 M ³
CRANE	5t @10M
AHC CRANE	50t @10M
IMO NUMBER	9651931

CLASS: ABS (A1) @ ABS (A1) ACC @ OPS-1
OFFSHORE SUPPORT VESSEL WITH OPS CODE 2008 FOR UNRESTRICTED SERVICE, THE FLOATING VESSEL CLASS-1

THIS DOCUMENT AND THE CONTENT ARE COPYRIGHT AND REMAIN PROPERTY OF FOCAL MARINE & OFFSHORE PTE LTD. THEY MUST NOT BE COPIED IN WHOLE OR IN PART TO ANY THIRD PARTY FOR ANY PURPOSE WITHOUT PRIOR WRITTEN PERMISSION FROM FOCAL MARINE & OFFSHORE PTE LTD. THE RECEIPT OF THIS DOCUMENT IMPLIES ACCEPTANCE OF THIS CONDITION.

2	AMENDED AS PER OWNER COMMENTS	USE	AUG-19-2013
1b	AMENDED AS PER OWNER COMMENTS	N.K.	MAR-17-2013
1a	AMENDED AS PER DESIGN PROGRESS	N.K.	MAR-17-2013
REV NO.	REVISION DESCRIPTION	BY	DATE
OWNER			
JAYA SHIPBUILDING AND ENGINEERING PTE LTD			
BUILDER			
PT JAYA ASIATIC SHIPYARD			
PROJECT			
83.6M PLATFORM SUPPLY VESSEL "FOCAL 507"			
APPROVE			
DWG TITLE: GENERAL ARRANGEMENT			
JOB NO.: P-1355			
DWG NO.: P-1355-021			
CHECKER			
SCALE: 1:200(A1)			
DRAWER			
CLASS: ABS			
FOCAL MARINE & OFFSHORE PTE LTD			
TEL: 86-21-58705786 FAX: 86-21-50313265 EMAIL: info@focalmarine.com			