

30 Tonne Clump Weight

The 30 tonne clump weight includes pad eyes on the top of the clump for the attachment of slings and other equipment.

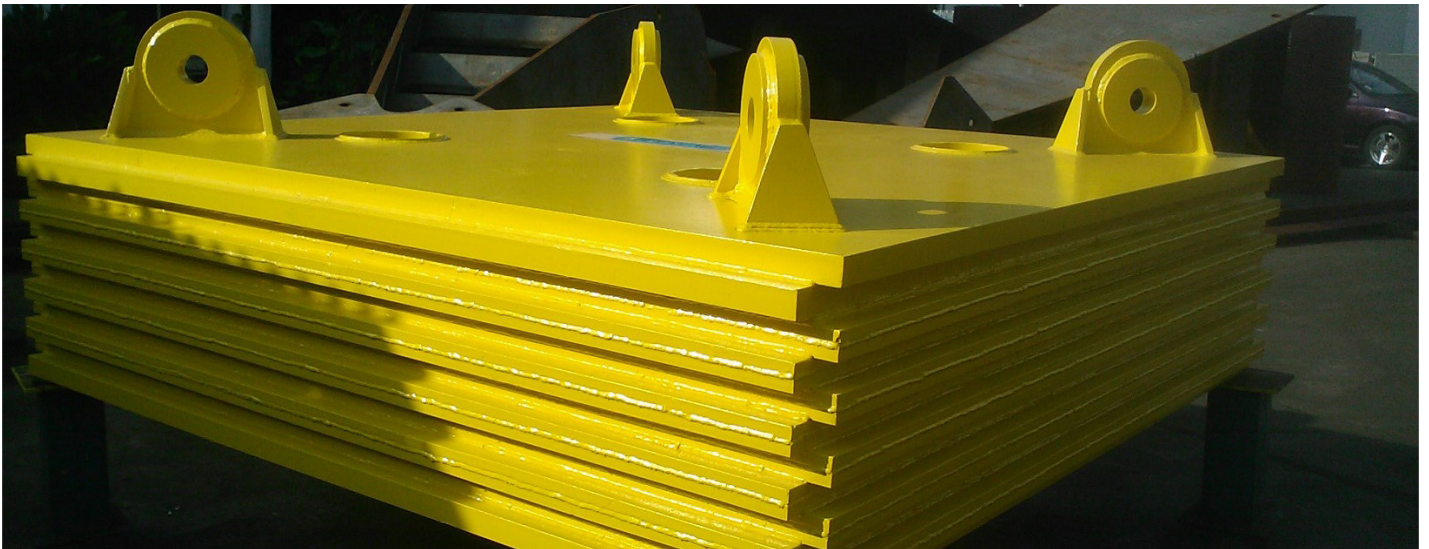
The clumps can also be modified with additional pad eyes for pull-ins if required.

Anchoring

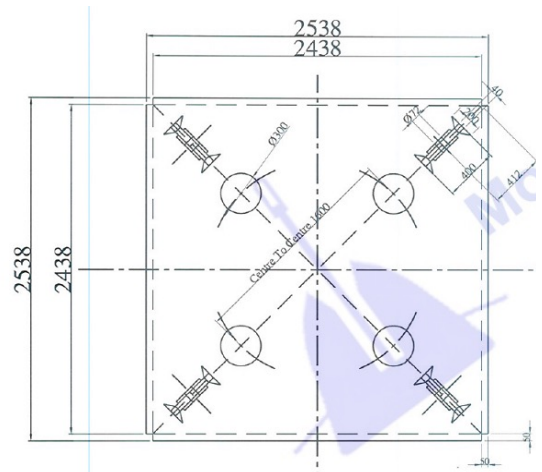
Subsea Positioning

Umbilical Initiation

Pipeline Initiation



Particulars	Value
Dry Weight	29,500kg
Submerged Weight	25,743kg
Dimensions	
Outer	2540 x 2540mm
Height	975mm



For more information, please send us a message at www.subcon.com/contact/ and we can provide more details specific to your project.

Australia: +61 8 9200 2218
Singapore: +65 65 6407 7457
Europe: +31 15 800 0228

[in linkedin.com/company/subcon/](https://www.linkedin.com/company/subcon/)

